



Beaufort County Public Works Stormwater Infrastructure Project Summary

Project Summary: Sea Island Parkway/Halifax Road Outfall

Narrative Description of Project:

Completion: May-12

Project improved 2,255 L.F. of drainage system. Shinn cut and reconstructed 1,225 L.F. of outfall ditch and workshelf. Cleaned out 940 L.F. of outfall ditch and 90 L.F. of roadside ditch. Installed (1) access pipe and (3) bleeder pipes. Jetted and repaired (1) crossline pipe. Installed rip rap and hydroseeded for erosion control.

2012-010 / Sea Island Parkway/Halifax Road	Labor Hours	Labor Cost	Equipment Cost	Material Cost	Contractor Cost	Indirect Labor	Total Cost
APINS / Access pipe - installed	35.0	\$796.01	\$382.37	\$1,054.56	\$0.00	\$0.00	\$2,232.94
AUDIT / Audit Project	1.5	\$30.72	\$0.00	\$0.00	\$0.00	\$0.00	\$30.72
BKFILL / Back Fill	10.0	\$204.80	\$103.70	\$31.77	\$0.00	\$0.00	\$340.27
BPINST / Bleeder pipe - Installed	17.0	\$387.80	\$122.84	\$322.24	\$0.00	\$0.00	\$832.88
CLPJT / Crossline Pipe - Jetted	6.0	\$131.28	\$66.48	\$34.48	\$0.00	\$0.00	\$232.24
HAUL / Hauling	91.0	\$1,971.08	\$1,247.71	\$1,572.52	\$0.00	\$0.00	\$2,341.54
HMT / Haul Material	6.0	\$128.52	\$79.86	\$232.03	\$0.00	\$0.00	\$440.41
HYDR / Hydroseeding	26.0	\$563.54	\$101.08	\$452.05	\$0.00	\$0.00	\$1,116.67
LM / Loading Materials	5.0	\$102.40	\$59.61	\$43.44	\$0.00	\$0.00	\$205.45
ODCO / Outfall ditch - cleaned out	72.0	\$1,720.25	\$449.04	\$172.25	\$0.00	\$0.00	\$2,341.54
RSDCL / Roadside Ditch - Cleanout	12.0	\$265.96	\$47.73	\$42.12	\$0.00	\$0.00	\$355.81
WSGRB / Workshelf - Grubbed	91.0	\$2,115.63	\$968.36	\$496.75	\$0.00	\$0.00	\$3,580.74
WSL / Workshelf - Level	52.0	\$1,191.55	\$416.19	\$199.27	\$0.00	\$0.00	\$1,807.01
WSSHN / Workshelf - Shinn cut	84.0	\$1,966.31	\$910.14	\$586.07	\$0.00	\$0.00	\$3,462.52
Indirect Labor, Services and Supplies	0.0	\$0.00	\$0.00	\$0.00	\$0.00	\$8,206.15	\$8,206.15
2012-010 / Sea Island Parkway/Halifax Road Sub Total	520.5	\$11,834.33	\$4,967.32	\$5,260.26	\$0.00	\$8,206.15	\$25,708.99
Grand Total	520.5	\$11,834.33	\$4,967.32	\$5,260.26	\$0.00	\$8,206.15	\$25,708.99

Before



During



After



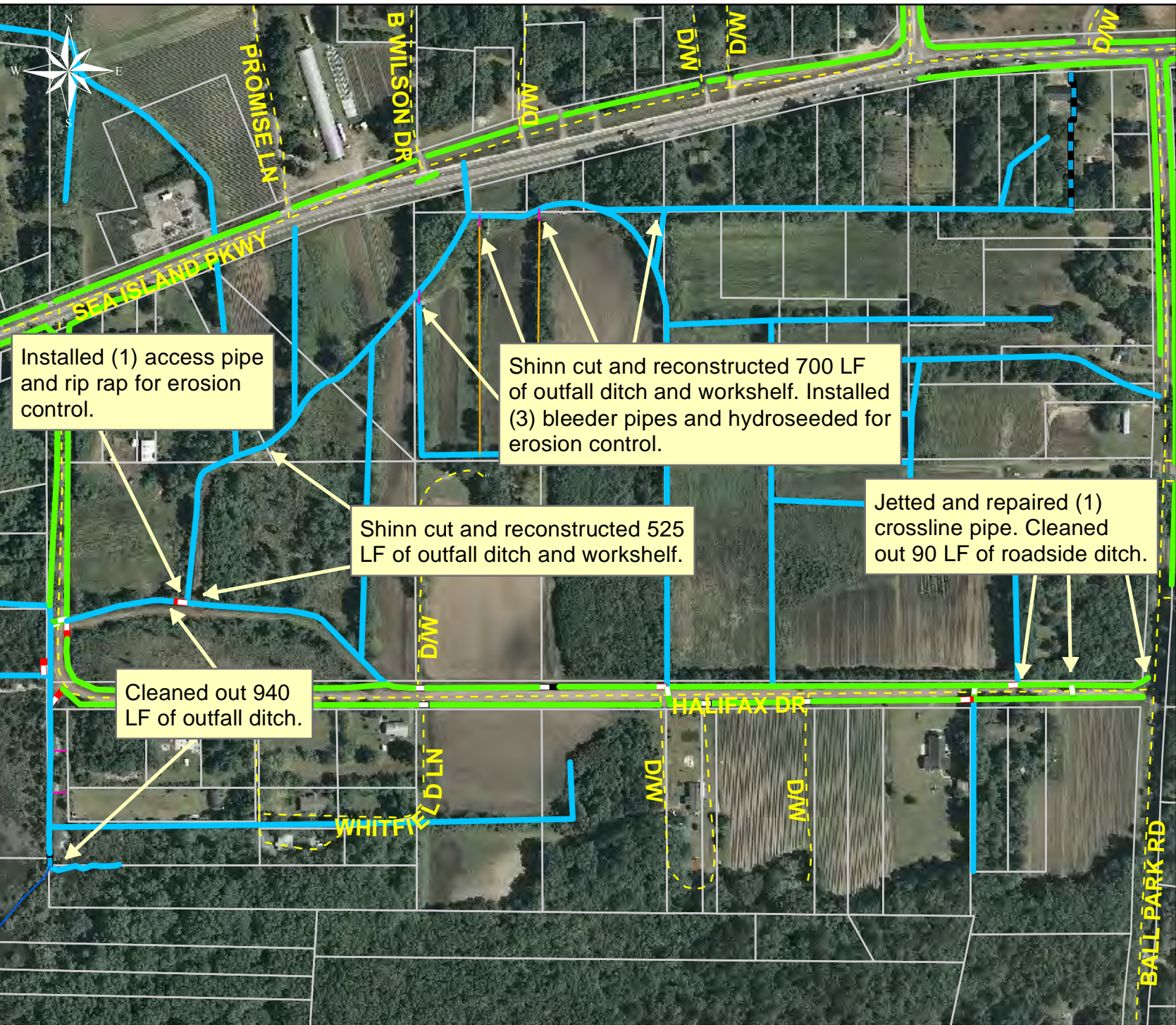
Project: Sea Island Parkway/Halifax Drive Outfall

Activity: Drainage Improvement

Project #: 2012-010

Township: St. Helena Island

Completed: May 2012



Legend

Drainage Type

- River
- Stream
- Outfall
- Lateral
- Lateral Pipe
- Roadside
- Roadside Pipe
- Crossline
- D/W
- Access
- Piped
- Bleeder
- Parcels

